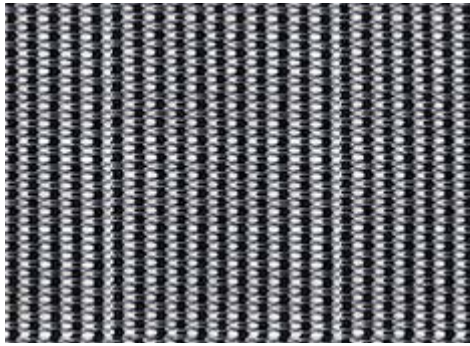
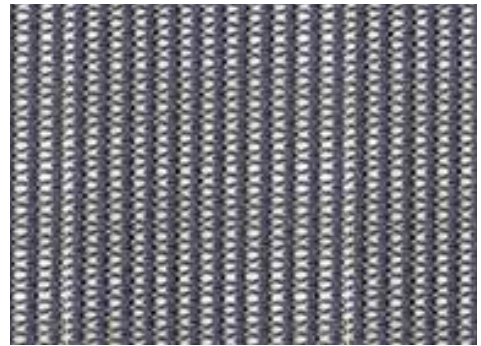


## M3 Mesh



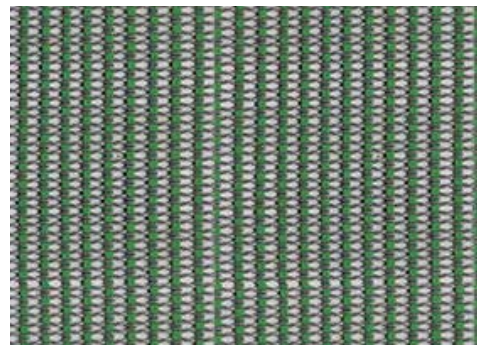
Graphite M31



Slate M32



Snow M33



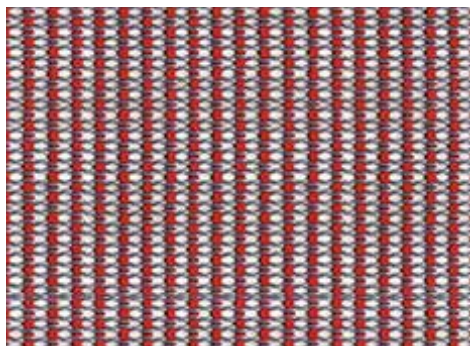
Sage M34

Pattern: M3 Mesh

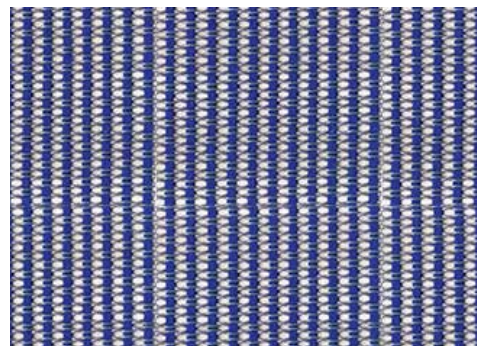
75% Copolyester,  
25% Polyester

Abrasion: 60,000  
Double Rubs

Soil and Stain Resistant



Cardinal M35



Royal M36



Tangerine M37



Plum M38






EXPRESSSHIP  
FABRICS

## 9to5 Seating's ExpressShip Mesh Program


**Need it fast?** We have you covered with a wide variety of mesh options in 5 days! ExpressShip Program offers expedited delivery on our seating products, now with many mesh options shown here. Product will be completed and ready to ship within 5 business days.


ExpressShip Purchase Orders placed separately ship in 5 business days. If combined with other fabrics the lead time of the fabric with the longest lead time will be used.


# info

<b>Pattern</b>	M3 Mesh
<b>Fiber Content</b>	75% Copolyester, 25% Polyester
<b>Abrasion</b>	60,000 Wyzenbeek Double Rubs
<b>Applicable ACT®</b>	  
<b>Light-fastness</b>	Grade 4, 40 Hours
<b>Cleaning Code</b>	W

### Icon Upholstery Definitions

 **Fire Retardancy**  
D-DIN EN 1021:2006 part 1 (cigarette test) when tested with non flame retardant foam B3 density (22kg/cu m) minimum. Ignition classification of the upholstery composite according to DIN 66084 P-c.  
PASSES - California 117

 **Abrasion**  
DIN En ISO 105-E04:2009. The rub test uses a wet and a dry undyed cotton cloth as an abradent. The resultant staining of the air-dried cotton is then assessed on a scale of 1-5 -the requisite minimum pass grades being 3-4 in dry state and 3 in wet - hence for some fabrics two numbers are given.

 **Colorfastness to Light**  
BS EN 20 105-B02 uses a filtered Xenon-arc light source with a spectrum approximating that of solar radiation. Assessment is against a prescribed set of dyed wool standards by comparing a sample's rate of fading against a scale of 1-8. Each higher number reference is roughly twice as color fast as the preceding one, denoting very poor to very good.

#### Cleaning Code Definition

W: Water-Based cleaning agents or foam may be used

**9to5**<sup>®</sup>  
s e a t i n g

3211 Jack Northrop Ave.  
Hawthorne, CA 90250

**PHONE**  
888.925.SEAT

**FAX**  
866.925.SEAT

**EMAIL**  
sales@9to5seating.com

**9to5seating.com**  
Follow us: @9to5seating

